



The Islander

April 2017

A Publication of the St. George Island Civic Club
The next club meeting will be on April 20. Traci Moses, Franklin County Superintendent of Schools will be the speaker

The President's Corner – Diane Bodenhamer

Aloha everyone! SGICC had a good March, with great turnout at both bingo and the monthly club meeting. We're happy our public officials have been coming to the meetings to update us - Sheriff Smith was the speaker in February, District One County Commissioner RICKY Jones spoke in March, and we are looking forward to School Superintendent Traci Moses on Thursday April 20th.

Highlights from March 16th:

** In an effort to contribute to the community throughout the year, SGICC will be supporting the Back Pack Buddies Program in Franklin County, which helps children who may be "at risk" for being without food on weekends and holiday breaks. There will be a large box at EVERY CLUB MEETING near the door to collect food donations, which should be individually portioned items that are non-perishable and require little to no cooking. Suggested items include: canned ravioli/spaghetti o's/soup/beef-a-roni/beef stew/beans & franks/etc., individually wrapped pop tarts/granola bars, juice/milk boxes, individual packs of instant grits/oatmeal/cereal, dried/canned fruit (raisins), fruit chews, peanut butter crackers, goldfish, pudding/jello cups. In addition to the monthly food drive, the membership (See President, Page Two)

Time to Renew Membership for 2017

If you haven't renewed your membership for 2017, this will be your last newsletter. Dues are \$20 per person and checks can be made out to SGI Civic Club and mailed to P.O. Box 451, Eastpoint, FL 32328. We also request a valid email address if possible. Check with Kelly Rowland at krowland@mediacombb.net to see if you have renewed.

New Weather Station For SGI

SGI owners and visitors can now get more up-to-date weather information with the installation of a WeatherSTEM station at the end of the Eastpoint fishing pier.

According to an article in the Apalachicola Times written by David Adlerstein, "the unit has two high-resolution live cameras, pointed towards the island and bay, along with a wealth of solar-powered weather sensors and measuring gauges that can monitor everything from solar and UV radiation, rain rate and rainfall, temperature and humidity, wind speed and direction, and wet bulb globe temperature."

There are now three stations in Franklin County with one at the FSU Coastal and Marine Lab and another at Franklin County High School.

Go to either the iPhone or Android App store to get the free app to monitor this service. For more information, email sgibridge@franklin.weatherstem.com

(President, From Page One)

voted to sponsor one child with the program for \$300. Cash donations can also be put in the food box and will be used to purchase additional food items for that month.

** Diane passed along the following Sheriff's Update: AJ Smith is planning a series of town hall meetings TBD; traffic enforcement is greatly increased though they are "not out looking" - this includes golf cart and ATV enforcement; there will soon be radar and defibrillators in all department cars; the substation at the SGI Centennial Bank is open - when a car is present, a deputy is on site.

** We have host/hostess volunteers for every month except August and September.

** Commissioner Ricky Jones spoke on the following items: possible improvements/sea wall for the boat ramp (which is difficult to use safely with an east wind); cleanliness of the bridges; current golf cart situation within the county and possible future changes to code; parking for Panhandle Players; issues regarding dumping debris on the road side, especially by contractors; and enforcing ordinances. Questions were taken from members regarding oysters and reseeding; status of the maritime museum parcel, which has been tabled until the second meeting in April; paving of island roads (Pine); signage/advertising encroachment on county road right-of-way; and code enforcement, including turtle ordinances. SGICC and Ricky would like to set up a committee to

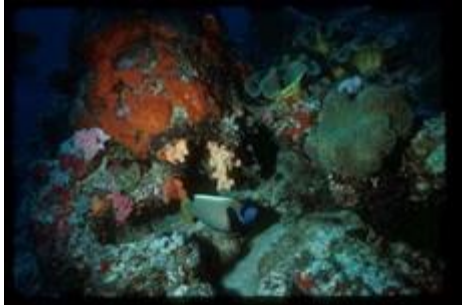
provide an interface to him on issues important to SGI. Diane is looking for two members to be on the Commission Interface Committee_- please forward your name to her if you're interested. That's it for now - please join us at 6:30 p.m. on Thursday, April 20th for the next meeting!!

Lighthouse April Full Moon Climb

The April Full Moon Climb at the Cape St. George Lighthouse on St. George Island will be held on Monday, April 10. The Sunset/Full Moon Climb will take place from 7:30 p.m. to 9:00 p.m. and will include light hors d'oeuvres and a sparkling cider toast to the full moon. Cost is \$15.00 for the general public and \$10.00 for members of the St. George Lighthouse Association. The sun will set at 8:04 p.m. and the "Pink" moon will rise at 7:44 p.m. on April 10. The April full moon is called the Pink moon in tribute to wild ground phlox, also called "pinks," which is one of the earliest widespread flowers to appear in the spring. Full Moon names are attributable to native American tribes, most notably the Algonquin, who named the moons to mark the changing seasons. After sunset, people are invited to climb to the top of the lighthouse for a breathtaking view of the full moon, as space and time permit. Cost is \$10.00 for the general public and \$5.00 for SGLA members. Because space is limited, reservations are recommended. For reservations or more information, please contact the Lighthouse Gift Shop at 850-927-7745.

Upcoming Events

"Translating the language of life" Lecture – FSU Marine Lab



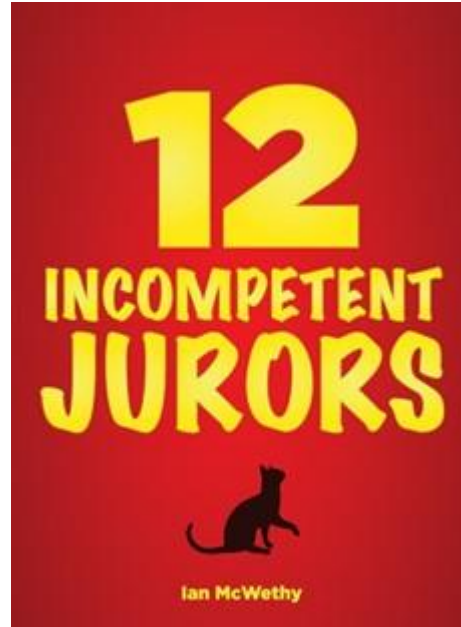
Most organisms on Earth have neither eyes nor ears and so must decide to run from, eat, or mate with things nearby based on chemical cues. On Thursday, April 6, 7 pm - 8 pm. Dr. Mark Hay (Georgia Tech) will discuss how understanding, translating, and using this chemical cross-talk among marine species can provide new and powerful options for curing degradation in marine systems. Coral reefs will be used as an example, but similar interactions probably occur in all communities. Light refreshments will be provided prior to talk.

The FSU Marine Lab is located at 3618 US-98, in St Teresa. For more information, go to www.marinelab.fsu.edu/

Panhandle Players present 12 Incompetent Jurors

The Panhandle Players of the Forgotten Coast is offering its third production of their 2016-2017 season with performances of 12 Incompetent Jurors by Ian McWethy, to be held Friday and Saturday, April 7 and 8, at 7:30 pm, and Sunday, April 9, at 3:00 pm, at the historic Chapman Auditorium in Apalachicola at Highway 98 and 12th Street. Directed by Judy Loftus, 12 Incompetent Jurors is a comedy, a hilarious spoof on the classic 12 Angry Men. When a man is accused of abducting half a dozen cats, it's

an open-and-shut case, even for a jury that's filled with odd balls like a dim-witted PR



guy, a bickering couple, and a man obsessed with french fries. After all, every scrap of evidence indicts the accused who is obviously very, very guilty of stealing cats. Case closed. And yet, Juror #8, a wannabe lawyer, believes that the "Cat Burglar" is innocent. Will he be able to sway the other jurors, or will they side with Juror #3, the only sane man in the room?

Tickets are \$15, and may be purchased online at panhandleplayers.com, click on "Tickets," or <https://panhandleplayers.ticketleap.com>, or at the door. For more information, go to www.panhandleplayers.com

Bay Friendly Landscaping Workshop

The Apalachicola National Estuarine Research Reserve will be hosting a Bay Friendly Landscaping workshop on Saturday, April 8th, from 1:00-3:30 p.m. Yard design and maintenance can have a big effect on adjacent water bodies. Participants (*See Landscaping, Page Four*)

(Landscaping, From Page Three)
will learn about resources to help them transform their yard into a luscious bay conscious landscape. The class will also



feature innovative Green Infrastructure techniques such as rain gardens, green roofs, and bio-swales. The workshop will be held at the Apalachicola National Estuarine Research Reserve, 108 Island Drive, Eastpoint. The class is free. Please register for the class in advance. For more information contact Emily Jackson at (850) 670-7743 or send an email to emily.a.jackson@dep.state.fl.us

Estuary Class



Join the Apalachicola National Estuarine Research Reserve on Friday, April 14th, 12:00-4:00pm to explore the estuary we depend on. Participants will learn about the habitats and creatures that make up the estuary and how the river and bay are intricately connected. These habitats will be seen up close aboard the Reserve's research vessel the *Henry Lee*. The workshop will be

based at the Apalachicola National Estuarine Research Reserve, 108 Island Drive, Eastpoint. The class is \$20.00. Please register in advance. For more information contact Emily Jackson at (850) 670-7743 or send an email

to: emily.a.jackson@dep.state.fl.us or Anita Grove at (850) 670-7708 or Anita.Grove@dep.state.fl.us. Rain date is April 28th.

Apalachicola Antique & Classic Boat & Car Show



Antique & Classic Boats & Cars, examples of classic and traditional vessels, workboats, and fiberglass and aluminum classics will all be on display on Saturday, April 15 from 10 am until 4:00 pm. Displayed will be Studebakers, Model A's, T's, Chevys and more, plus a large display of antique outboard engines.

Other items on display will be:

- Boat building demonstration throughout the day by local boat builders

(See Antiques, Page Five)

(Antiques, From Page Four)

- The Apalachicola Traders' Canoe, a hand built 50-foot long vessel used between 1750-1850, recovered from the Apalachicola River at the Cotton Warehouse
- Kids model boat building and art activities
- Tours of the waterfront
- The Coast Guard Auxiliary will have free information on safe boating.
- The Dept. of Environmental Protection will be on hand to give out information on the Clean Boating Program.
- The Apalachicola National Estuarine Research Reserve will have a booth on area flora and fauna.
- The Apalachicola RiverKeeper will have information on the special qualities of our unique pristine river and bay system.

For more information, call (850) 653-9419
Or go to www.apalachicolabay.org

Apalachicola Farmers Market



This local favorite is held the second and fourth Saturday of each month at the Mill Pond Pavillion at the Scipio Creek Marina in Apalachicola. Featuring seafood, produce, honey, homemade breads, pies, and other regional specialties from 9 am-1pm. For more information, go to

www.facebook.com/ApalachicolaFarmersMarket

This month the market will be held April 8 and April 22.

Wednesdays at ANERR

April 19: Tracking Fish Movement in Apalachicola Bay, 108 Island Drive. Eastpoint/Speaker: Chip Cotton, PhD, FSU Coastal and Marine Lab. Registration is not required, but seating is limited. For more information, call (850) 670-7700.

Carrabelle Riverfront Festival



The Carrabelle Riverfront Festival from Friday, April 21 through Saturday, April 22, at Avenue B and Marine Street along the beautiful Carrabelle Riverwalk is a street festival with colorful arts & craft vendors; educational folk life demonstrations, including the mysterious Legend of Tate's Hell; wonderful maritime exhibits and activities, like the interactive touch tanks from the Gulf Specimen Marine Lab; unique children's activities like the Pirates of the Carrabellean, Children's Pirate Academy; delicious local seafood vendors and traditional fair foods; festive knee-slapping, boot-stomping music; and amazing live entertainment – like the now famous Fishy Fashion Show, the Parade of the Species, and the Pet Fashion Pageant. Admission to this family friendly and pet friendly event is FREE and open to the public.

(See Carrabelle, Page Six)

(Carrabelle, From Page Five)

Also be sure to join two partner events on Saturday - the Franklin Senior Center's Legend of Tate's Hell 5K run and the Carrabelle Chamber of Commerce's Forgotten Coast Cruisers Vintage Car Show, which has doubled in size and is still growing.

Be sure to check for exciting announcements and surprises at the webpage,

www.carrabelleriverfrontfestival.com

Tate's Hell and Back 5k Run/Walk



The Tate's Hell and Back 5k Run/Walk will be held April 22. Race starts at 8:00 am. Pre-registration and pickup starts at 6:45 am. The race course begins at Carrabelle Christian Center at 142 River Road, just off 98 in Carrabelle, Florida. Run or Walk on River and Mill Road to Tate's Hell State Forest and Back!

Registration before March 22 – Adults \$20 and Youth \$12 (under 18). Race day registration – Adults \$25 and Youth \$15. Registration includes a technical fabric shirt. Age class awards for males and females (under 20 and then in each 10- year increment). All adult finishers will also receive swag to be revealed on our Facebook page closer to Race Day. For more information, call 850-544-5410. All proceeds will benefit Franklin County Senior Center in Carrabelle.

FSU Marine Lab Open House

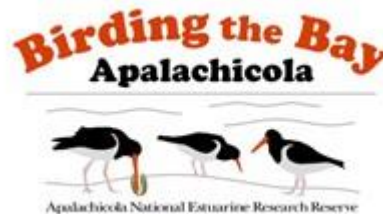
On Saturday, April 22, the Florida State University Marine Lab at 3618 US-98, St Teresa, will hold their 2017 Open House.



The subject will be “Connecting Marine Science & Society”

Active engagement in protecting our oceans and coastlines is something we all can do! Help us celebrate that ability and our scientific knowledge of the sea at our biennial Open House. Free and open to the public. Interactive displays for children and food will be available for purchase. 10 am - 3 pm. For more information, go to www.marinelab.fsu.edu/

Birding the Bay



Join the Apalachicola National Estuarine Research Reserve (ANEER) on Saturday, April 22, for a day-long birding event on the Forgotten Coast for birders of all levels, from advanced to beginners. Professionally-
(See Birding, Page Seven)

(Birding, From Page Six)

led tours will focus on shorebirds, migratory birds, and/or woodland species. See colorful song birds like Indigo Buntings and Summer Tanagers on St. George Island on their migratory stop over, view shorebirds in the shallow waters around St. George Island State Park, visit the pine woodlands where the Red Cockaded Woodpecker thrives, or learn the basics of birding with Audubon at the (ANERR).

After a morning in the field, participants will return to the ANERR Nature Center for lunch and a lecture by Budd Titlow, award-winning nature photographer and author, professional Wildlife biologist and wetlands scientist (Emeritus). The afternoon will also feature educational booths including the University of Massachusetts with a migratory mist net and bird banding demonstration, birds of prey information, Florida Audubon and representatives with the Florida Wild Mammal Association. Visitors not registered for the tours are welcome to go birding along the ANERR boardwalks and beach, or attend the afternoon lecture. There will also be bird videos playing at the Nature Center throughout the day. The Jackson Childs “Gulf Crossing: Story of Spring” documentary will be shown at 10:00am in the Multipurpose Room. The educational booths will be staffed from 10am-2pm and include children’s activities and birding info. A silent auction open to all rounds out the afternoon.

Tours are for intermediate to experienced birders and are most appropriate for those 8 years and up. Children must be accompanied by an adult at all times. For beginner birding, sign up for the Birding 101 class. Tours are not strenuous. Seats are limited and available first come, first serve; participants must register and pay in advance.

\$45.00 ticket includes: Guided tour, roundtrip transportation to and from ANERR to the birding tour sites, lunch, a Sibley’s birding book, commemorative t-shirt and a reusable tote bag filled goodies. Participants choose from one of three options:

- Tour 1: St. George Island migratory songbirds, shorebirds, woodland birds
- Tour 2: Red Cockaded Woodpecker tour
- Tour 3: Birding 101 Guided tour for beginner birders. Learn birding basics, and see shorebirds and woodland species at ANERR.

Limited packages without tours are available. Package includes lunch, the lecture, a t-shirt, Sibley birding book and tote bag for \$35.00.

Attendance for the movie, information booths, and silent auction activities are free and open to the public. ANERR’s nature center is free and open to the public Tuesday-Saturday 9am-4pm.

To register, visit birdingthebay.eventbrite.com. For more information, call 850-670-7743. Full refund available until April 3rd. Tours will happen rain or shine. If there is lightning, we will delay the tours until danger has past, then continue.

Explore the Black Backwater of Tate's Hell Swamp



On Saturday, April 29, join this four-mile intermediate canoe/kayak trip where *(See Backwater, Page Eight)*

(Backwater, From Page Seven)

participants will experience the sights, smells, and sounds of one of the most bio-diverse ecosystems in the world. This Spring Tour will explore the Spring blooms of Tate's Hell. Students will need to bring their own brown bag lunches and kayak/canoes. \$22 fee. 10 am - 2 pm. Led by Instructor, Serge LaTour, Owner, LuLutra LLC, Kayak/Canoe Guide, Certified Green Guide. For more information and to register:

<http://tinyurl.com/zewudl7>

SGI Brew Fest



The 2nd Annual SGI Brewfest will be held on Saturday, April 29, from 1:00pm to 4:00pm at Paddy's Raw Bar and Journeys of St. George Island. The SGI Brewfest is a one day beer tasting festival designed to promote the appreciation of craft beer all while listening to live music and enjoying great food. This is a fundraiser for the Franklin County Humane Society and all proceeds will benefit the homeless dogs and cats of Franklin County. VIP ticket holders and Early Admission ticket holders will be granted access beginning at NOON. General

Admission ticket holders will be granted access at 1:00pm.

Ticket sales are very limited and Tickets must be purchased in advance via the SGI Brewfest website. Tickets will not be sold at the door. Ticket holders will have the opportunity for unlimited tastings of a number of different beers. Food will be available for an additional charge. Enjoy live music throughout the event. Designated Driver ticket holders will have free water and sodas available. Brewers are being added daily so be sure to check the Brewfest website for the latest news and updates. Bring ID for age verification. For security and safety purposes no one under 21 years of age will be admitted.

For more information please visit:

www.sgibrewfest.com

Thanks to the Franklin County Tourist Development Council for Upcoming Events. Go to: <http://www.saltyflorida.com/events>

2017 Board of Directors

Diane Bodenhamer President

bodenhmr@me.com

Vacant Vice-President

Mike O'Connell Treasurer

poconnell1414@gmail.com

Kelly Rowland Secretary

krowland@mediacombb.net

Directors:

Lon Wilkens lonandpenny@outlook.com

Linda Thurman sgibeach1@gmail.com

Eric Roberts Immediate Past President

egrob2@fairpoint.net

SGI Civic Club Mailing Address: P.O. Box 451, Eastpoint, FL 32328

Please visit our website:

www.stgeorgeislandcivicclub.org

Email us at sgicivicclub@gmail.com

The Islander is edited by Eric Roberts